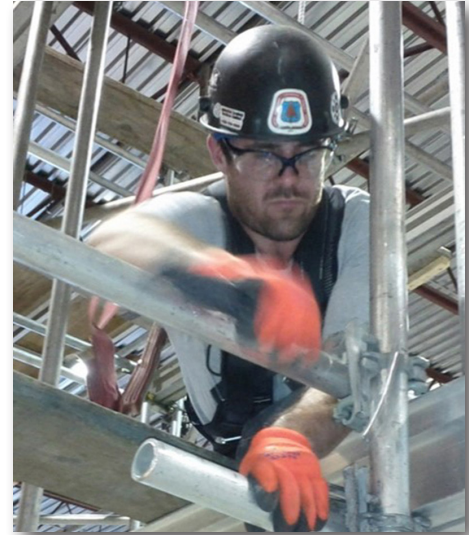


# What is a... SCAFFOLDER?

Scaffolders assemble systems that are temporary structures used to support equipment and material and to provide access for workers in the construction and maintenance of buildings and facilities.

## TYPICAL DUTIES

- Unload scaffolding material
- Set up base plates and scaffold tubes
- Cut and measure as required
- Attach scaffolding to structures to stabilize them
- Install stairs and walkways
- Mount guard rails and safety netting
- Dismantle scaffolding at the end of the job
- Read and interpret blueprints, drawings and sketches



Scaffolders work in teams, both indoors and outdoors, often at extreme heights. The work is exciting but physically demanding, often working long hours in adverse weather conditions. Apprentices work alongside qualified journeypersons and receive on-the-job training.

# TRAINING TO BECOME SCAFFOLDER

## APPRENTICESHIP TRAINING

A scaffold apprentice must complete 5,200 workplace hours and 360 in-school hours of training. This is completed in three levels of training, each for three weeks. Through combined work experience and technical training, it takes 4 years to become a journeyman.

An applicant who previously completed courses or work experience related to the scaffolding trade may qualify for credit that could reduce the term of apprenticeship.

Although scaffolding is not a designated trade in the province of British Columbia, the BCRCC provides a comprehensive Scaffold Certification Program that meets and exceeds industry standards.

BCRCC scaffold apprentices obtain the skills, qualifications and safe work practices required to become valuable members of the job site team.



## SKILLS & ABILITIES

- Good physical condition
- Positive attitude
- Works well with others
- Good communication skills
- Apply safe work practices
- Organizational skills
- Visualization skills
- Comfortable working at heights

